

- NOTES:**
- 1. PLANS NOT TO SCALE.
  - 2. ALL SIGN AND DEVICE SPACING WILL BE PLACED ACCORDING TO M.U.T.C.D. STANDARDS.
  - 3. FLAGGERS WILL BE USED IF NECESSARY TO DIRECT VEHICLES AROUND WORK ZONE.
  - 4. FOR NIGHT WORK ALL DEVICES WILL BE LIT.
  - 5. WORK ZONE MAY VARY DEPENDING ON SITE CONDITIONS. TCS MAY MAKE FIELD ADJUSTMENTS AS NECESSARY.
  - 6. ALL NO PARKING SIGNS ARE TO BE PLACED 24 HOURS BEFORE WORK BEGINS.
  - 7. TRAFFIC CONTROL FOR SHOULDER WORK TO SUPPORT DIRECTIONAL BORE.

ALL DEVICES MUST CONFORM  
TO CURRENT MUTCD AND  
ARVADA STANDARDS

WORKING HOURS  
8:30 A.M. TO 3:30 P.M.

REVIEW BY: Trandon Struck  
DATE: 10/20/2021

**LEGEND**

- CHANNELIZING DEVICE
- WORK ZONE
- POST TEMPORARY NO PARKING SIGNS
- ARROW PANEL
- UNIFORMED TRAFFIC CONTROL OFFICER
- TRAFFIC CONTROL FLAGGER
- DIRECTION OF TRAFFIC
- UNDERGROUND CONDUIT
- DB DIRECTIONAL BORE
- TRENCHING

**WYCO**  
**FIELD SERVICES**  
Where quality still counts.

WYCO FIELD SERVICES  
7935 E PRENTICE AVENUE  
SUITE 301  
GREENWOOD VILLAGE, CO 80111

DIRECTION

ADDRESS: 8204 XENON ST

CITY/STATE: ARVADA, CO

COUNTY: JEFFERSON

REVISION: .

DRAWN BY: WYCO FIELD SERVICES  
THOMAS STOTT

DATE: 9/8/2021

CUSTOMER INFO

MCI / METRO  
SOD HOUSE C SEC 2

REQUESTOR:

OFFICE: DTC

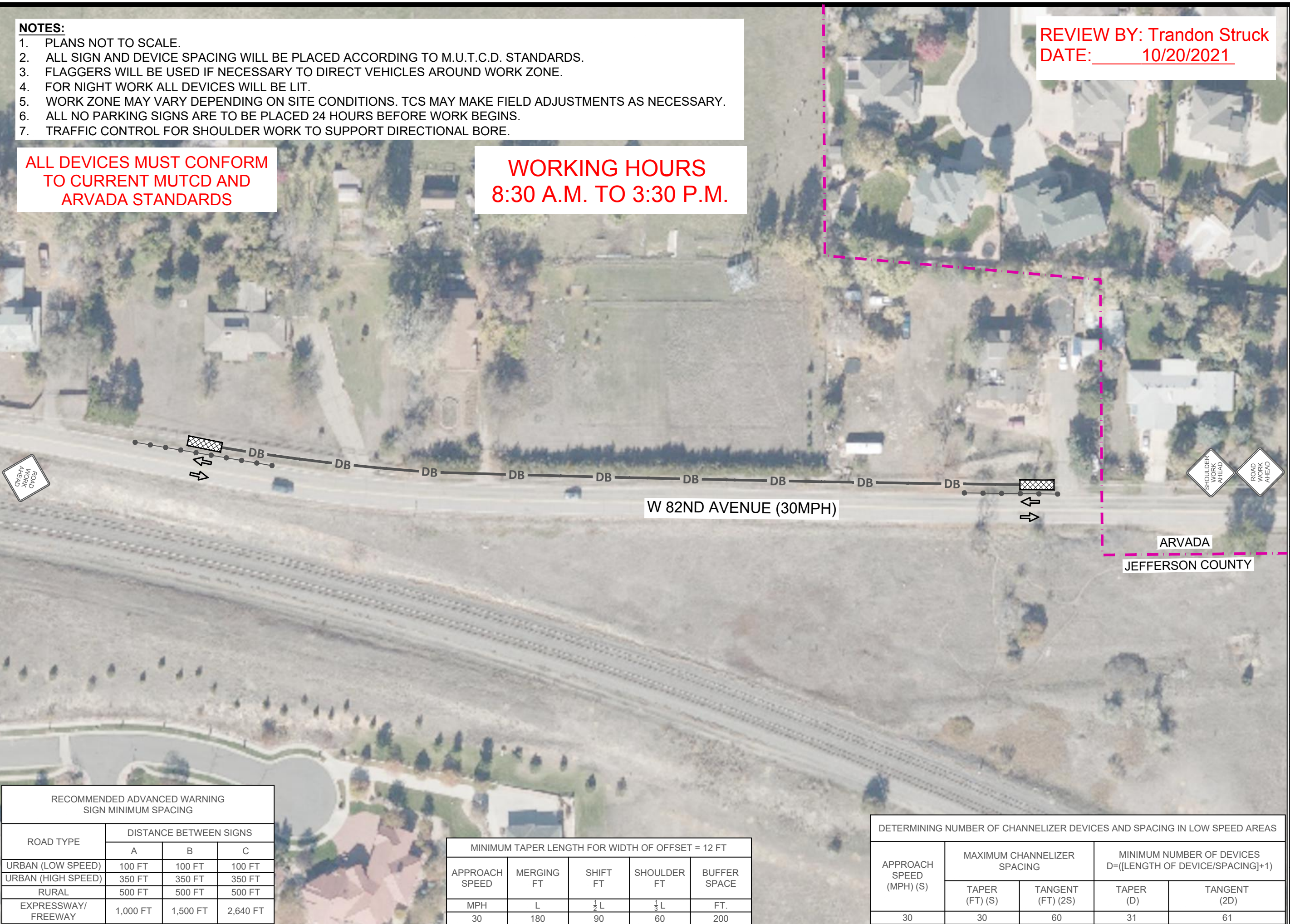
PROJECT: DIRECTIONAL BORE

JOB # 210344

ALL DEVICES MUST  
CONFORM TO  
M.U.T.C.D  
STANDARDS

1

SCALE: NOT TO SCALE



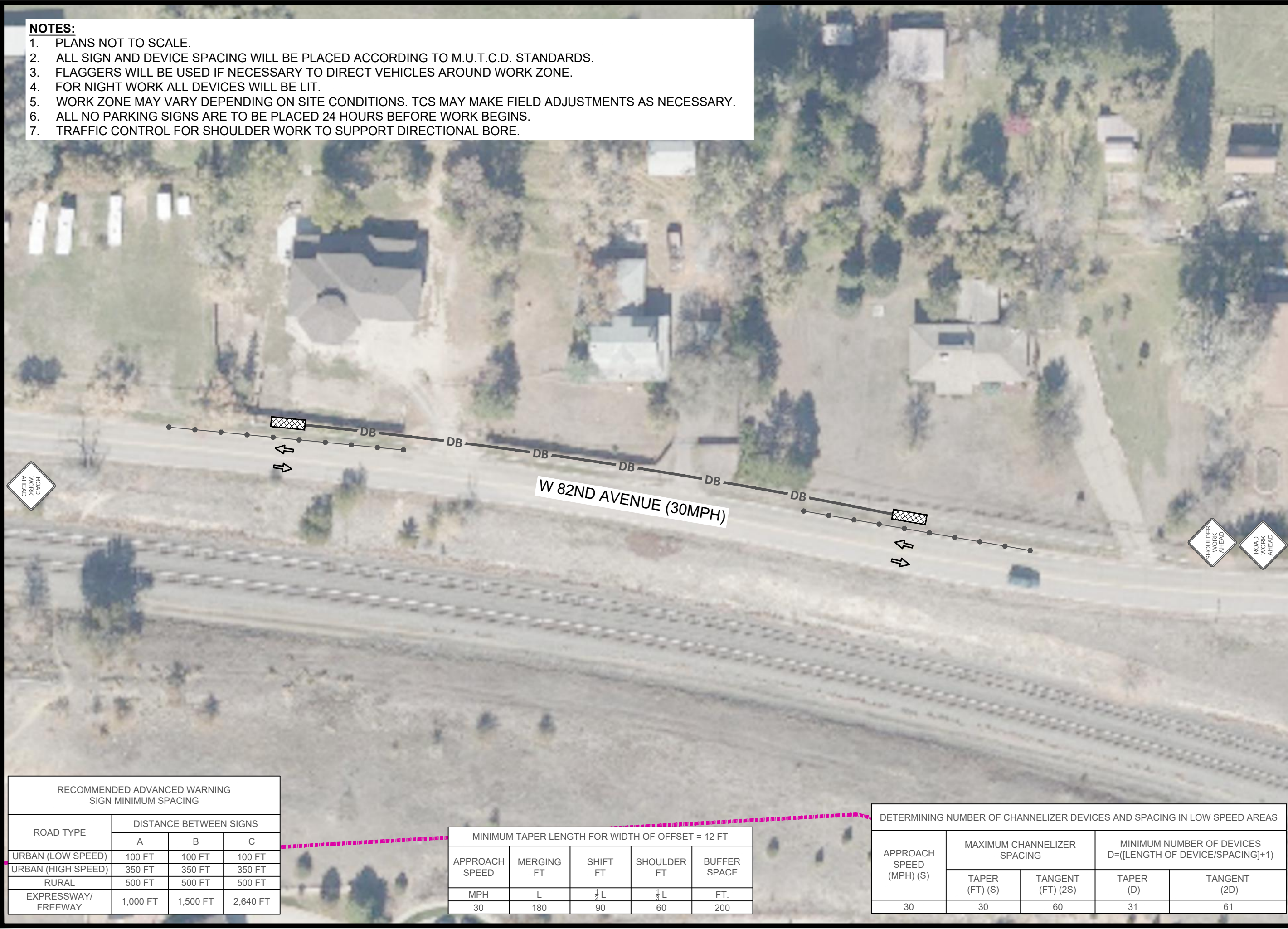
RECOMMENDED ADVANCED WARNING SIGN MINIMUM SPACING			
ROAD TYPE	DISTANCE BETWEEN SIGNS		
	A	B	C
URBAN (LOW SPEED)	100 FT	100 FT	100 FT
URBAN (HIGH SPEED)	350 FT	350 FT	350 FT
RURAL	500 FT	500 FT	500 FT
EXPRESSWAY/ FREEWAY	1,000 FT	1,500 FT	2,640 FT

MINIMUM TAPER LENGTH FOR WIDTH OF OFFSET = 12 FT				
APPROACH SPEED	MERGING FT	SHIFT FT	SHOULDER FT	BUFFER SPACE
MPH	L	$\frac{1}{2}$ L	$\frac{1}{3}$ L	FT.
30	180	90	60	200

DETERMINING NUMBER OF CHANNELIZER DEVICES AND SPACING IN LOW SPEED AREAS				
APPROACH SPEED (MPH) (S)	MAXIMUM CHANNELIZER SPACING		MINIMUM NUMBER OF DEVICES D=([LENGTH OF DEVICE/SPACING]+1)	
	TAPER (FT) (S)	TANGENT (FT) (2S)	TAPER (D)	TANGENT (2D)
30	30	60	31	61



- NOTES:**
- 1. PLANS NOT TO SCALE.
  - 2. ALL SIGN AND DEVICE SPACING WILL BE PLACED ACCORDING TO M.U.T.C.D. STANDARDS.
  - 3. FLAGGERS WILL BE USED IF NECESSARY TO DIRECT VEHICLES AROUND WORK ZONE.
  - 4. FOR NIGHT WORK ALL DEVICES WILL BE LIT.
  - 5. WORK ZONE MAY VARY DEPENDING ON SITE CONDITIONS. TCS MAY MAKE FIELD ADJUSTMENTS AS NECESSARY.
  - 6. ALL NO PARKING SIGNS ARE TO BE PLACED 24 HOURS BEFORE WORK BEGINS.
  - 7. TRAFFIC CONTROL FOR SHOULDER WORK TO SUPPORT DIRECTIONAL BORE.

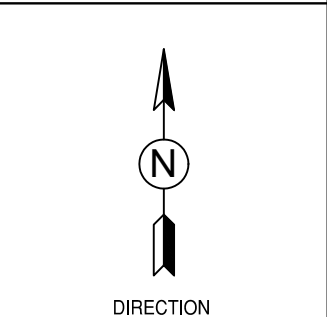


**LEGEND**

- CHANNELIZING DEVICE
- ▨ WORK ZONE
- ← POST TEMPORARY NO PARKING SIGNS
- ARROW PANEL
- UNIFORMED TRAFFIC CONTROL OFFICER
- TRAFFIC CONTROL FLAGGER
- ← DIRECTION OF TRAFFIC
- UNDERGROUND CONDUIT
- DB — DIRECTIONAL BORE
- ===== TRENCHING



WYCO FIELD SERVICES  
7935 E PRENTICE AVENUE  
SUITE 301  
GREENWOOD VILLAGE, CO 80111



ADDRESS:	8204 XENON ST
CITY/STATE:	ARVADA, CO
COUNTY:	JEFFERSON
REVISION:	.
DRAWN BY:	WYCO FIELD SERVICES THOMAS STOTT
DATE:	9/8/2021
CUSTOMER INFO	
MCI / METRO SOD HOUSE C SEC 2	
REQUESTOR:	
OFFICE:	DTC
PROJECT:	DIRECTIONAL BORE
JOB #	210344

ALL DEVICES MUST  
CONFORM TO  
M.U.T.C.D  
STANDARDS

RECOMMENDED ADVANCED WARNING SIGN MINIMUM SPACING			
ROAD TYPE	DISTANCE BETWEEN SIGNS		
	A	B	C
URBAN (LOW SPEED)	100 FT	100 FT	100 FT
URBAN (HIGH SPEED)	350 FT	350 FT	350 FT
RURAL	500 FT	500 FT	500 FT
EXPRESSWAY/ FREEWAY	1,000 FT	1,500 FT	2,640 FT

MINIMUM TAPER LENGTH FOR WIDTH OF OFFSET = 12 FT				
APPROACH SPEED	MERGING FT	SHIFT FT	SHOULDER FT	BUFFER SPACE
MPH	L	$\frac{1}{2}$ L	$\frac{1}{3}$ L	FT.
30	180	90	60	200

DETERMINING NUMBER OF CHANNELIZER DEVICES AND SPACING IN LOW SPEED AREAS				
APPROACH SPEED (MPH) (S)	MAXIMUM CHANNELIZER SPACING		MINIMUM NUMBER OF DEVICES $D = ((\text{LENGTH OF DEVICE} / \text{SPACING}) + 1)$	
	TAPER (FT) (S)	TANGENT (FT) (2S)	TAPER (D)	TANGENT (2D)
30	30	60	31	61







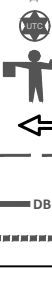

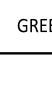
1. PLANS NOT TO SCALE.
2. ALL SIGN AND DEVICE SPACING WILL BE PLACED ACCORDING TO M.U.T.C.D. STANDARDS.
3. FLAGGERS WILL BE USED IF NECESSARY TO DIRECT VEHICLES AROUND WORK ZONE.
4. FOR NIGHT WORK ALL DEVICES WILL BE LIT.
5. WORK ZONE MAY VARY DEPENDING ON SITE CONDITIONS. TCS MAY MAKE FIELD ADJUSTMENTS AS NECESSARY.
6. ALL NO PARKING SIGNS ARE TO BE PLACED 24 HOURS BEFORE WORK BEGINS.
7. TRAFFIC CONTROL FOR SHOULDER WORK TO SUPPORT DIRECTIONAL BORE.



RECOMMENDED ADVANCED WARNING SIGN MINIMUM SPACING			
ROAD TYPE	DISTANCE BETWEEN SIGNS		
	A	B	C
URBAN (LOW SPEED)	100 FT	100 FT	100 FT
URBAN (HIGH SPEED)	350 FT	350 FT	350 FT
RURAL	500 FT	500 FT	500 FT
EXPRESSWAY/ FREEWAY	1,000 FT	1,500 FT	2,640 FT

MINIMUM TAPER LENGTH FOR WIDTH OF OFFSET = 12 FT				
APPROACH SPEED	MERGING FT	SHIFT FT	SHOULDER FT	BUFFER SPACE
MPH	L	$\frac{1}{2}$ L	$\frac{1}{3}$ L	FT.
30	180	90	60	200

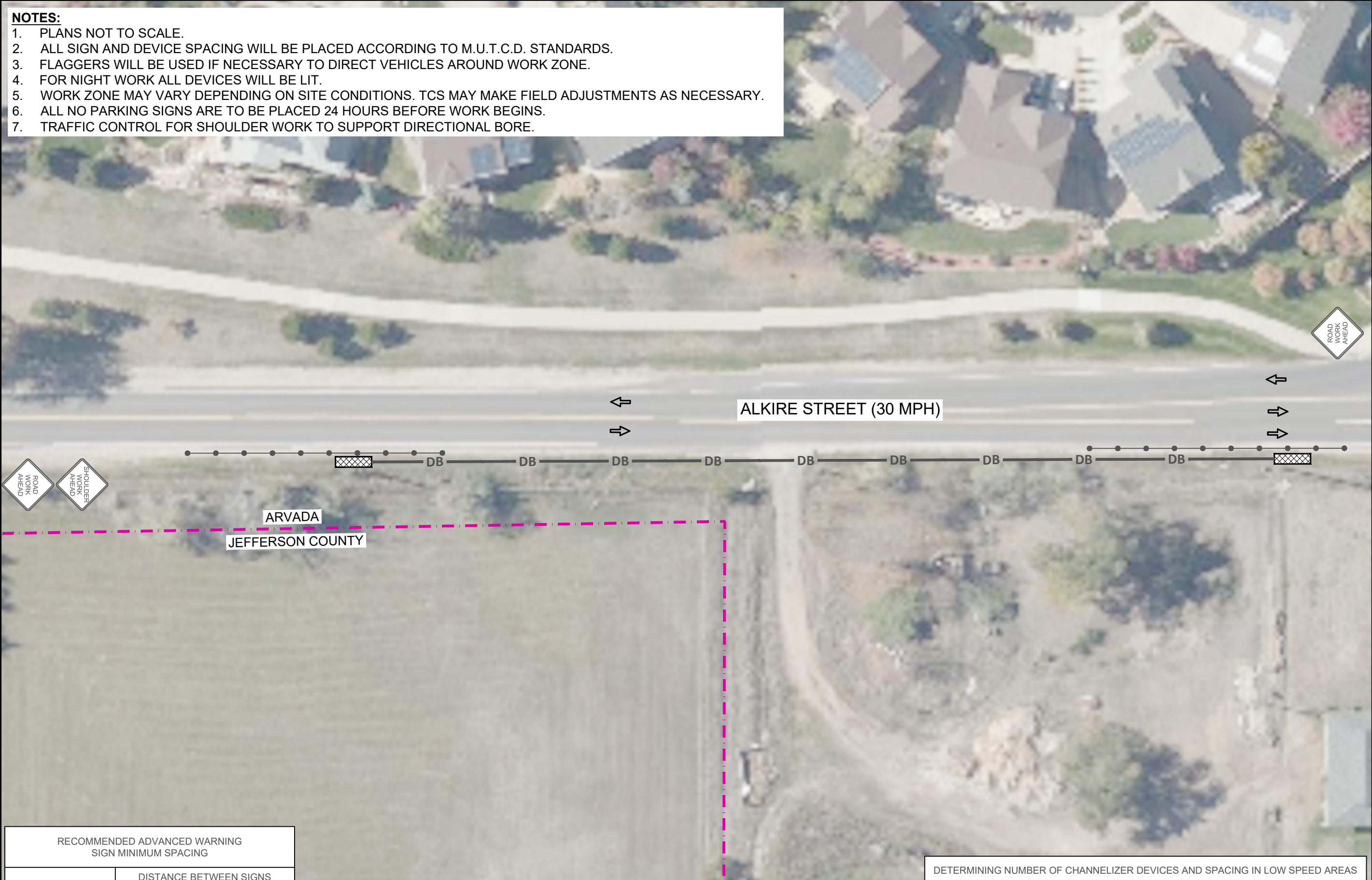
DETERMINING NUMBER OF CHANNELIZER DEVICES AND SPACING IN LOW SPEED AREAS				
APPROACH SPEED (MPH) (S)	MAXIMUM CHANNELIZER SPACING		MINIMUM NUMBER OF DEVICES D=([LENGTH OF DEVICE/SPACING]+1)	
	TAPER (FT) (S)	TANGENT (FT) (2S)	TAPER (D)	TANGENT (2D)
30	30	60	31	61

		<b>LEGEND</b> CHANNELIZING DEVICE WORK ZONE POST TEMPORARY NO PARKING SIGNS ARROW PANEL UNIFORMED TRAFFIC CONTROL OFFICER TRAFFIC CONTROL FLAGGER DIRECTION OF TRAFFIC UNDERGROUND CONDUIT DIRECTIONAL BORE TRENCHING
		
WYCO FIELD SERVICES 7935 E PRENTICE AVENUE SUITE 301 GREENWOOD VILLAGE, CO 80111		
		
DIRECTION		
ADDRESS:	8204 XENON ST	
CITY/STATE:	ARVADA, CO	
COUNTY:	JEFFERSON	
REVISION:	.	
DRAWN BY:	WYCO FIELD SERVICES THOMAS STOTT	
DATE:	9/8/2021	
CUSTOMER INFO		
MCI / METRO SOD HOUSE C SEC 2		
REQUESTOR:		
OFFICE:	DTC	
PROJECT:	DIRECTIONAL BORE	
JOB #	210344	
ALL DEVICES MUST CONFORM TO M.U.T.C.D STANDARDS		
4		
SCALE:	NOT TO SCALE	



NOTES:

- 1. PLANS NOT TO SCALE.
- 2. ALL SIGN AND DEVICE SPACING WILL BE PLACED ACCORDING TO M.U.T.C.D. STANDARDS.
- 3. FLAGGERS WILL BE USED IF NECESSARY TO DIRECT VEHICLES AROUND WORK ZONE.
- 4. FOR NIGHT WORK ALL DEVICES WILL BE LIT.
- 5. WORK ZONE MAY VARY DEPENDING ON SITE CONDITIONS. TCS MAY MAKE FIELD ADJUSTMENTS AS NECESSARY.
- 6. ALL NO PARKING SIGNS ARE TO BE PLACED 24 HOURS BEFORE WORK BEGINS.
- 7. TRAFFIC CONTROL FOR SHOULDER WORK TO SUPPORT DIRECTIONAL BORE.



RECOMMENDED ADVANCED WARNING SIGN MINIMUM SPACING			
ROAD TYPE	DISTANCE BETWEEN SIGNS		
	A	B	C
URBAN (LOW SPEED)	100 FT	100 FT	100 FT
URBAN (HIGH SPEED)	350 FT	350 FT	350 FT
RURAL	500 FT	500 FT	500 FT
EXPRESSWAY/ FREEWAY	1,000 FT	1,500 FT	2,640 FT

MINIMUM TAPER LENGTH FOR WIDTH OF OFFSET = 12 FT				
APPROACH SPEED	MERGING FT	SHIFT FT	SHOULDER FT	BUFFER SPACE
MPH	L	$\frac{1}{2}$ L	$\frac{1}{3}$ L	FT.
30	180	90	60	200

DETERMINING NUMBER OF CHANNELIZER DEVICES AND SPACING IN LOW SPEED AREAS				
APPROACH SPEED (MPH) (S)	MAXIMUM CHANNELIZER SPACING		MINIMUM NUMBER OF DEVICES D=([LENGTH OF DEVICE/SPACING]+1)	
	TAPER (FT) (S)	TANGENT (FT) (2S)	TAPER (D)	TANGENT (2D)
30	30	60	31	61

**LEGEND**

- CHANNELIZING DEVICE
- WORK ZONE
- POST TEMPORARY NO PARKING SIGNS
- ARROW PANEL
- UNIFORMED TRAFFIC CONTROL OFFICER
- TRAFFIC CONTROL FLAGGER
- DIRECTION OF TRAFFIC
- UNDERGROUND CONDUIT
- DIRECTIONAL BORE
- TRENCHING

**WYCO**  
**FIELD SERVICES**  
Where quality still counts.

WYCO FIELD SERVICES  
7935 E PRENTICE AVENUE  
SUITE 301  
GREENWOOD VILLAGE, CO 80111

DIRECTION

ADDRESS: 8204 XENON ST

CITY/STATE: ARVADA, CO

COUNTY: JEFFERSON

REVISION: .

DRAWN BY: WYCO FIELD SERVICES  
THOMAS STOTT

DATE: 9/8/2021

CUSTOMER INFO

MCI / METRO  
SOD HOUSE C SEC 2

REQUESTOR:

OFFICE: DTC

PROJECT: DIRECTIONAL BORE

JOB # 210344

ALL DEVICES MUST  
CONFORM TO  
M.U.T.C.D  
STANDARDS

5

SCALE: NOT TO SCALE